

Instructions for Joining the *WorkCamp Re-Boot* Minecraft Server on a MAC

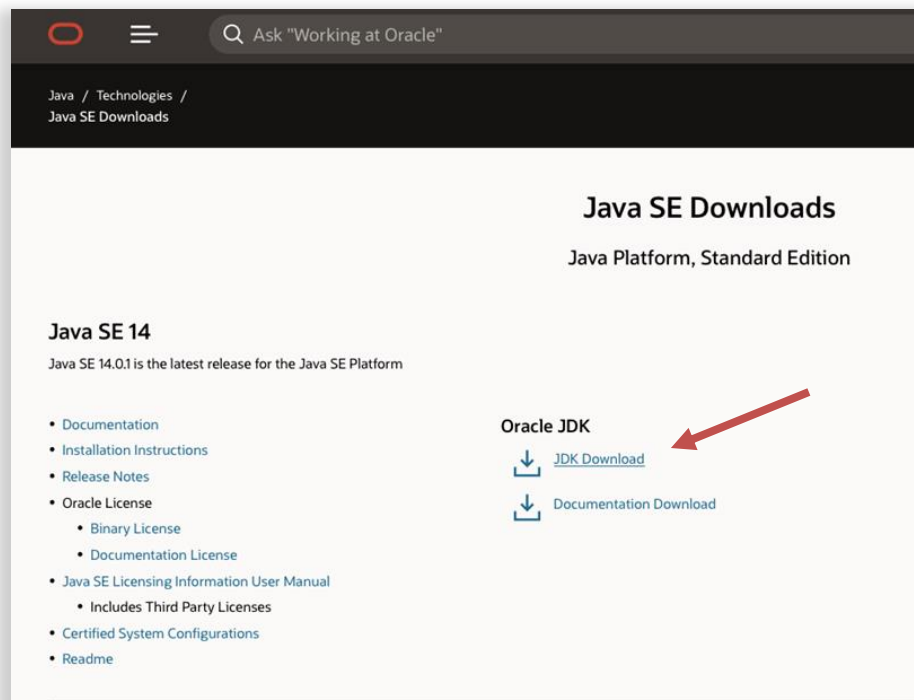
In this document you will find step-by-step instructions to download and join the WorkCamp Re-Boot Minecraft server on a Mac computer. There are three steps you will need to follow:

1. Install Java onto your computer
2. Install the Minecraft launcher onto your computer
3. Join the WorkCamp Re-Boot Server

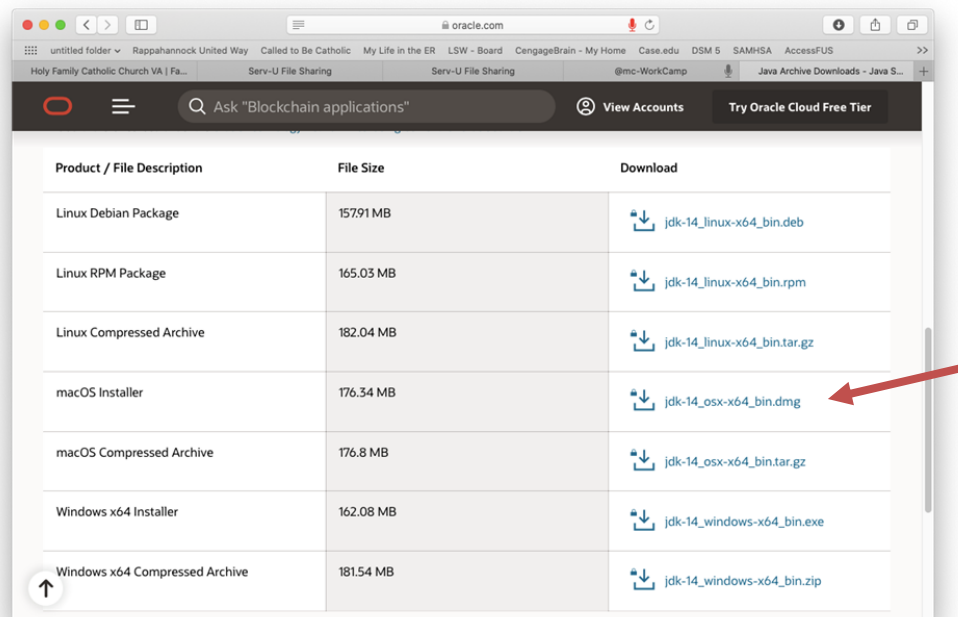
Install Java

You may skip this step if the latest Java is already installed.

1. Open your web browser and visit www.oracle.com/downloads/index.html
2. Click the “Java” option
3. Click “Java SE”
4. Click the “JDK Download” button under Java SE 14



- Click the download link for the **macOS Installer** in the table

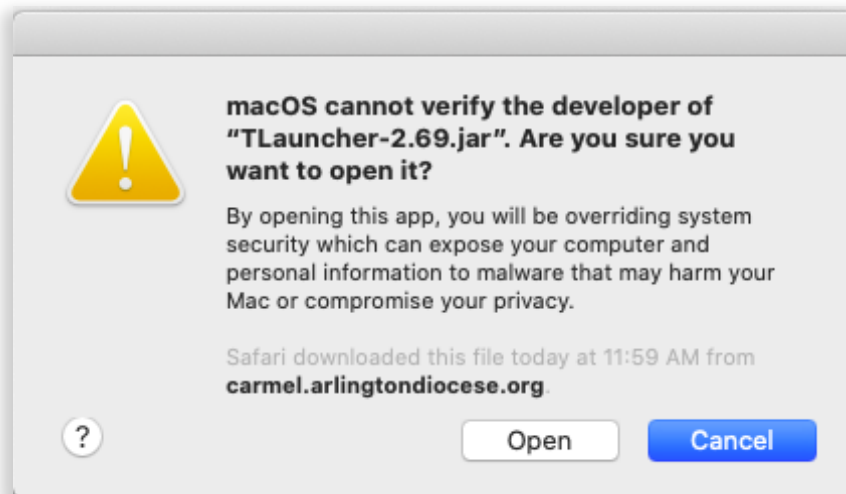


Product / File Description	File Size	Download
Linux Debian Package	15791 MB	jdk-14_linux-x64_bin.deb
Linux RPM Package	165.03 MB	jdk-14_linux-x64_bin.rpm
Linux Compressed Archive	182.04 MB	jdk-14_linux-x64_bin.tar.gz
macOS Installer	176.34 MB	jdk-14_osx-x64_bin.dmg
macOS Compressed Archive	176.8 MB	jdk-14_osx-x64_bin.tar.gz
Windows x64 Installer	162.08 MB	jdk-14_windows-x64_bin.exe
Windows x64 Compressed Archive	181.54 MB	jdk-14_windows-x64_bin.zip

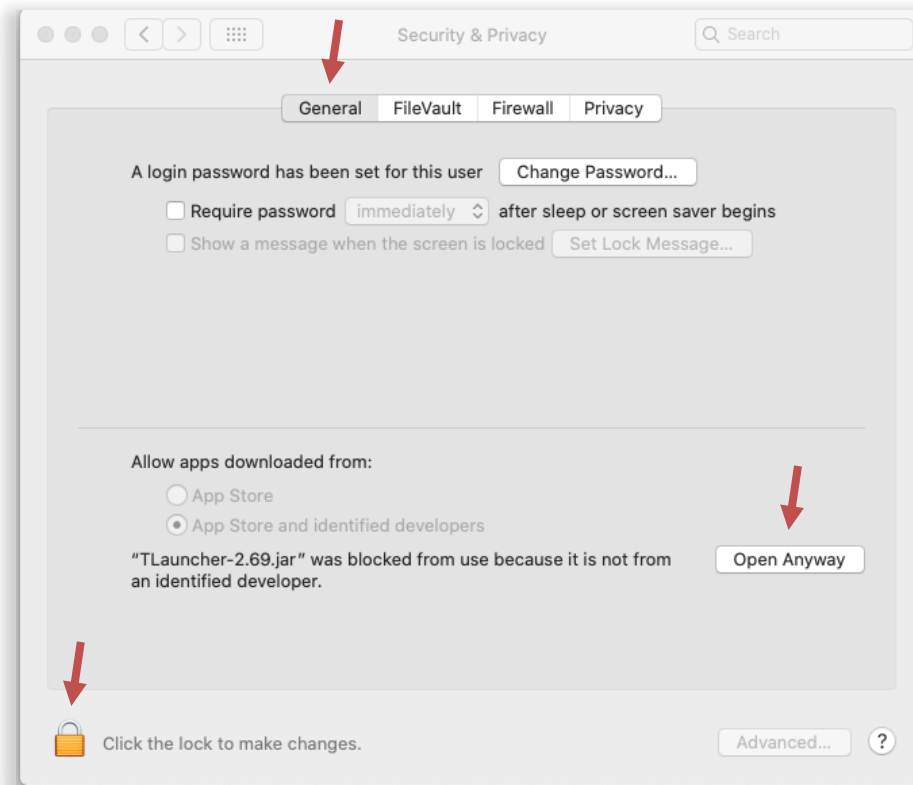
- Double-click the downloaded installer to launch the installation interface
- Follow the prompts to install Java

Install Minecraft Launcher

- The server file is online at www.arlingtondiocese.org/workcamp/minecraft/
- On a Mac, click the link to start downloading the file called T.Launcher-2.69.jar
- In the download folder, double click to begin installation
- Depending on the security setting on your Mac, you may get the following message. If not, continue with step #6.



5. To allow access open **System Preferences > Security & Privacy > General**. Click the lock icon and enter your password to allow changes. Next to “Launcher 2.69.jar” select open anyway.



6. Go back to your downloads and re-open the “TLauncher 2-69.jar” File
7. Follow the prompts to install.

Join the Minecraft Server

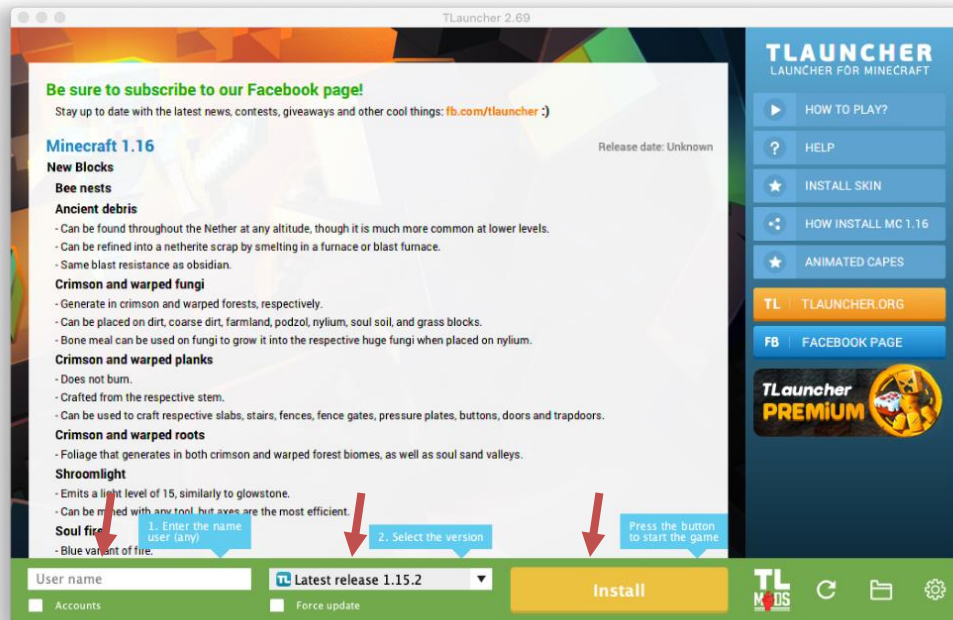
You will need to know your username and password to join the server. If you are a registered participant for WorkCamp Re-Boot the username and password have been created for you. See below for the username and password information. The username is unique to each participant based on their registered name. It is sensitive to capitalization and does not include any spaces.

Username: **FirstLast** (example: TimSmith)

Password: **wcrb2020**

1. Each time you wish to join the server, you will open the “TLauncher 2-69.jar” file installed

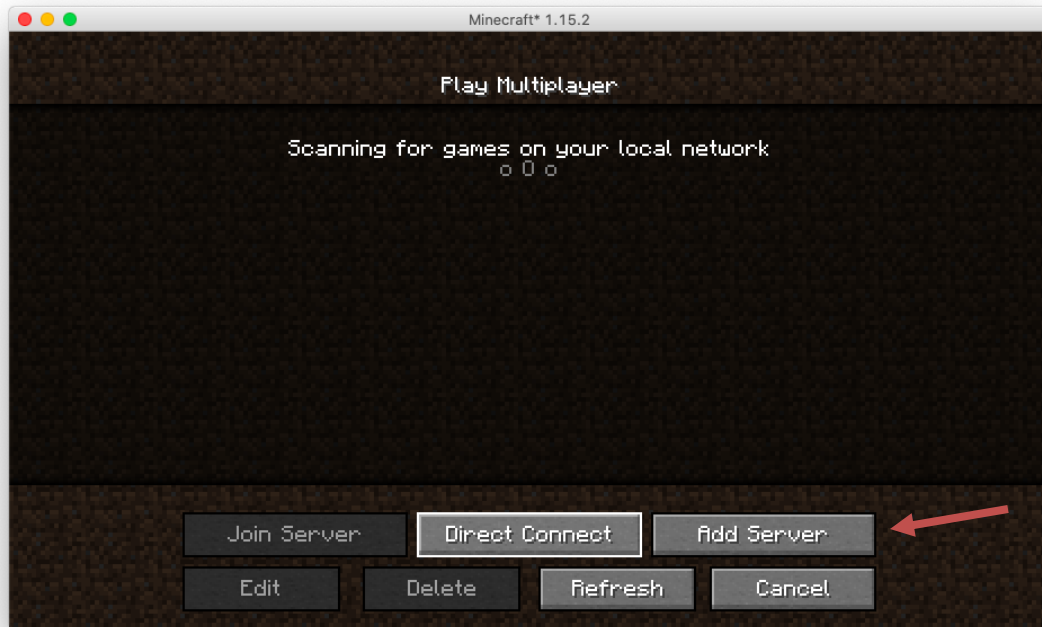
2. On the TLauncher page, where it says username, type in your unique username determined by the formula above. Choose latest release. Click install.



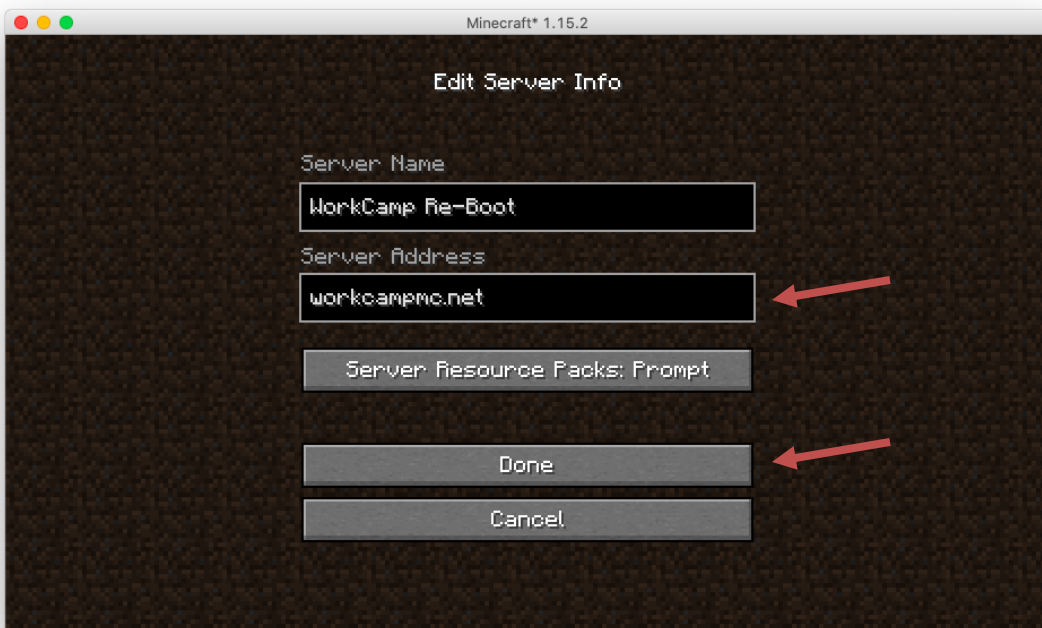
3. This will open the Minecraft game, which may take a few minutes to load.
4. Choose Multiplayer



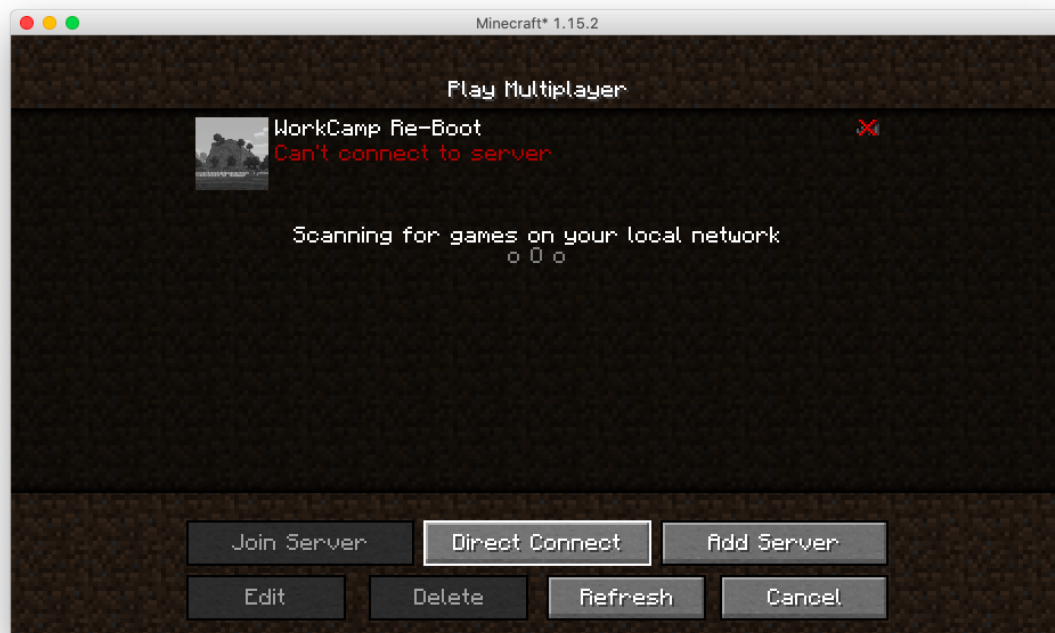
5. Choose option to Add Server



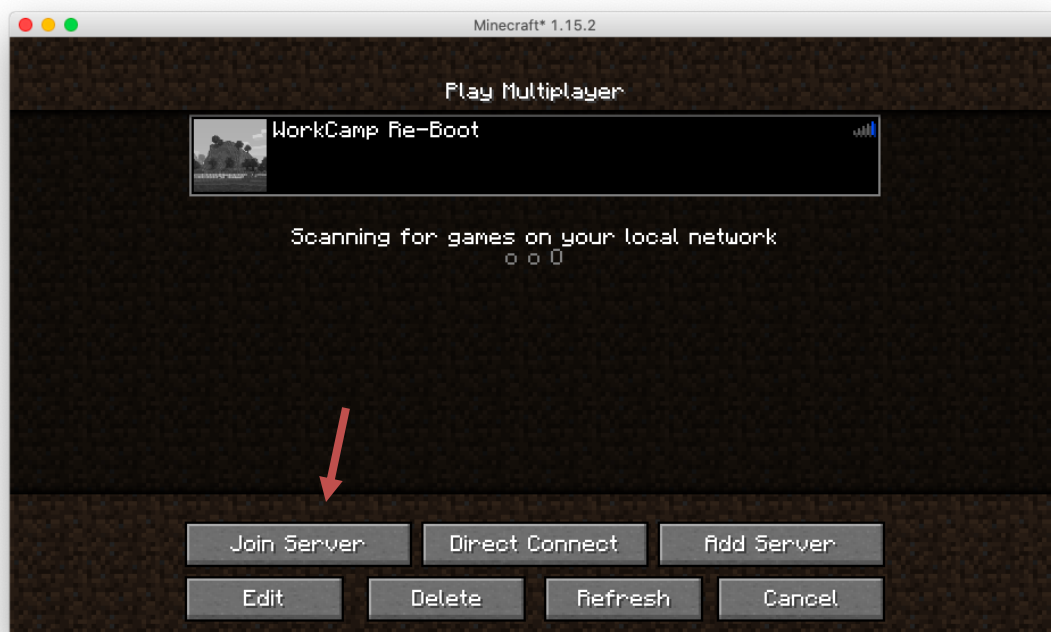
6. You can choose any name you like as this will only be visible to you. In the server address field, type: **workcampmc.net**. Hit done.



- The server has now been added to the list and will be available each day you log in. When the server is offline, a red "x" will appear. When it is online it will be green.



- Click on the server in the list and select Join Server



9. This will open the Minecraft server and you will be prompted to login. Type **/login wcrb2020** and then enter to sign in with the password.



10. Welcome to WorkCamp Re-Boot Minecraft. You are expected to follow all rules regarding behavior and language while in Minecraft.